

Oceanfront Estates

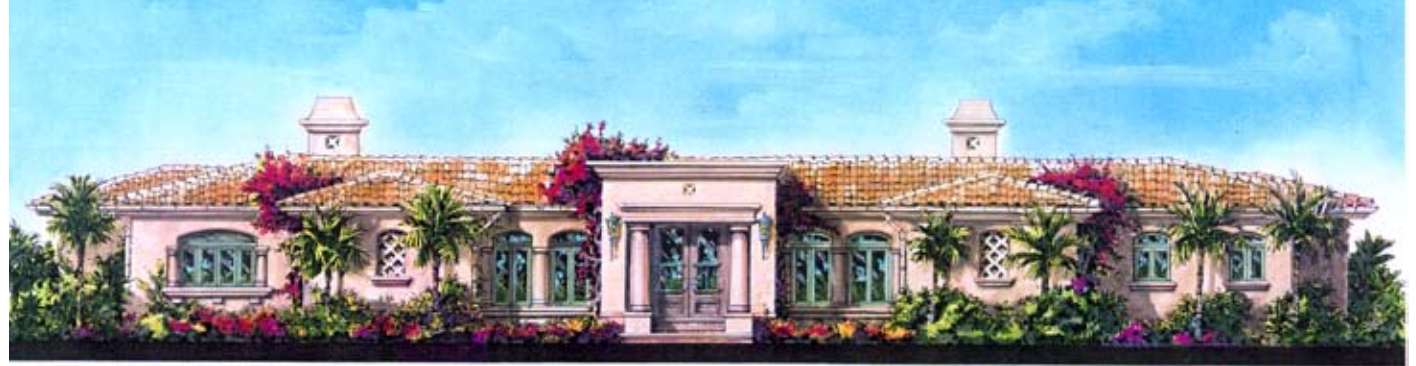
Capital Pacific Holdings

Rancho Palos Verdes, California

23,000 - 29,700 sq. ft. lots

(1/2 - 3/4 acre)

4,057 - 7,711 sq. ft. plans



An enclave of 79 luxury, semi-custom homes designed to meet the restrictive height limitations that were established to preserve views of the Pacific Ocean and Catalina Island from Rancho Palos Verdes Drive. Because of this, the homes are one-story on the uphill street side and cascade down at the rear becoming inverted two-story plans. Features include conservatories, exercise rooms, teen rooms, libraries, wine cellars and offices. The variety of lot sizes and conditions resulted in different shaped floor plans which added to the custom feel of the community. The size and elegance of the homes equals or exceeds custom homes in the area. (Drawings by James Adams)

*Award-Winning Project - See Awards List

