

## Campanile - Courtyard Series

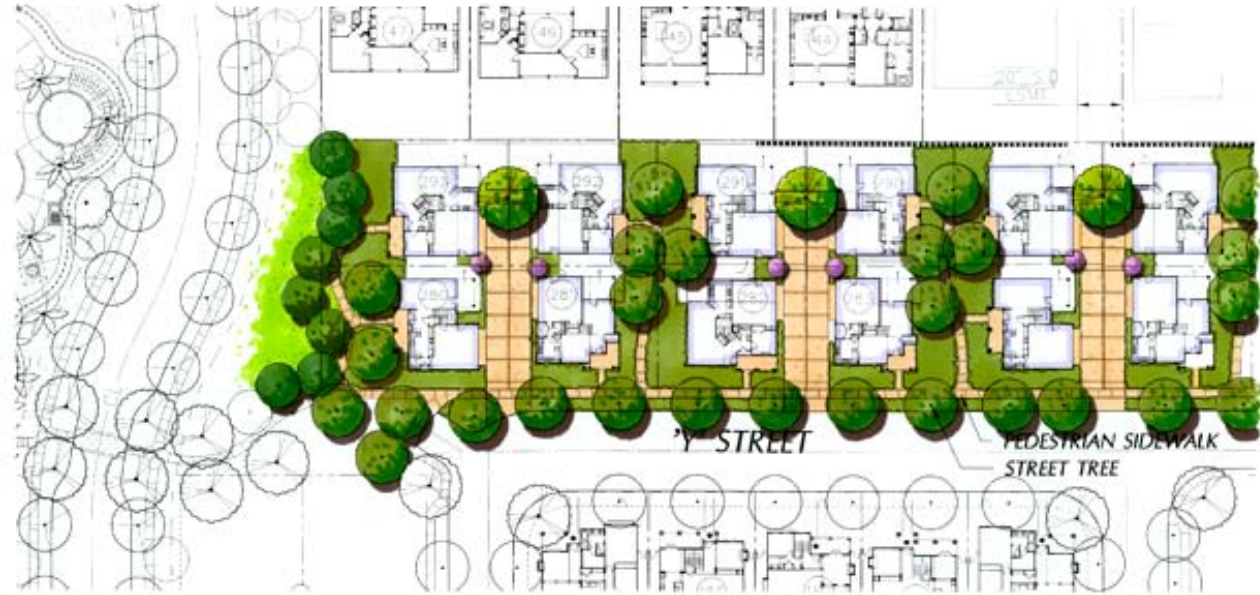
Wessman - Gonzales

Cathedral City, California

Garage access from alley

4,000 sq. ft. lots (40' wide plans)

1,561 - 1,982 sq. ft. plans



With three floor plan designs in three distinct architectural styles - Spanish, Bungalow, and Italian - these two-story courtyard homes offer friendly porches facing streets or public-access greenbelt space. The residences are grouped to allow for maximum privacy. Placing the driveways and garage and provides a more pedestrian-friendly environment. The two smaller homes each have 3 bedrooms and 2 ½ baths and the largest plan has 3 bedrooms and 3 full baths.

