

# Trafalgar Flats

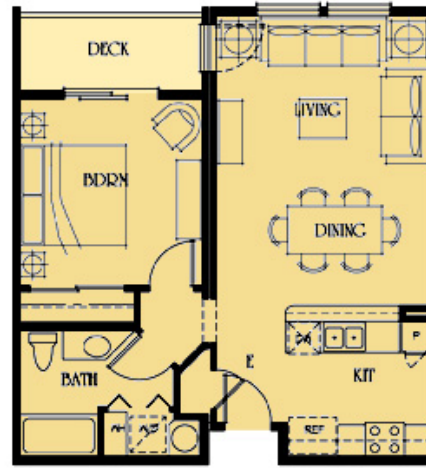
Costa Pacific Homes

Wilsonville, Oregon

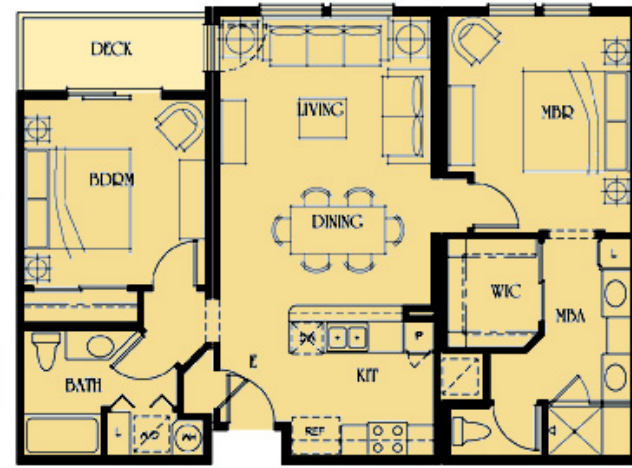
702 - 1,110 sq. ft. plans

This modular condominium project is located in the Village Center at Villebois, an award-winning sustainable community in Wilsonville, Oregon. The homes are adjacent to Piazza Villebois which is the heart of the Village Center — and the community. The Piazza offers live music, weekend farmer’s markets, and plenty of places perfect for gathering with friends or enjoying a quiet afternoon outdoors.

The condominium buildings with three stories over subterranean parking have striking architecture that complements the European village theme at Villebois. Two distinctive floor plans offer one bedroom with one bath, and two bedroom with two bath options. The condos range from 702 to 1,110 square feet, and feature gourmet kitchens and spacious balconies. Every home also includes a parking space in the gated garage, and the buildings are equipped with elevators and refuse chutes. These condominiums offer an affordable alternative for buyers to live the Villebois Village lifestyle.



PLAN 1  
702 SQ.FT.



PLAN 2  
1,064 SQ.FT.

